

# NEW KON Embossing Machines

**SecureSeal 60N**  
Manual Embossing Machine  
Light Duty



## Highlights:

- Extra long handle provides smooth, easy-pull embossing
- A quality hand-engraved brass seal
- Easily interchangeable dies
- Choose from two seal sizes: 1 1/8" + 1 3/8" (seal included)
- Convenient and easy to operate
- Clear, uniform impressions
- Compact & Portable
- Paper insertion depth: 2 inches from center of embossed surfaces
- Dimensions: 3.5" x 9" x 4.66"  
Weight: 11 lbs.
- One year warranty included; extended warranty available

**SecureSeal 70**  
Electric Embossing Machine  
Medium Duty



## Highlights:

- Whisper-quiet operation (50dB)
- A quality hand-engraved brass seal
- Easily interchangeable dies
- Adjustable pressure control
- Key lock prevents unauthorized use
- Automatically activated by inserting paper or via push button
- Paper insertion and position error minimized with built in adjustable back gauge and side guides
- Clear, uniform impressions on documents and gold foil seals
- Maximum paper insertion depth: up to 2.7 inches from center of embossed surface
- Carrying handle
- Minimal table top footprint; sturdy and reliable
- Dimensions: 3.7" x 11.2" x 7.2"  
Weight: 17.6 lbs.
- Power Source: Free voltage (100-240v), DC Motor
- One year warranty included; extended warranty available

**SecureSeal 110**  
Electric Embossing Machine  
Heavy Duty



## Highlights:

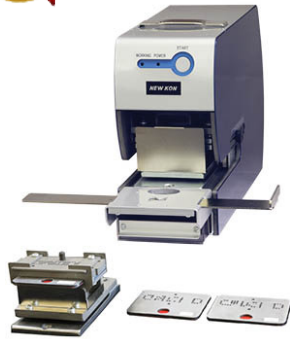
- Whisper-quiet operation
- A quality hand-engraved brass seal
- Key lock prevents unauthorized use
- Automatically activated by inserting paper or via push button
- Paper insertion and position error minimized with built in adjustable back gauge and side guides
- Clear, uniform impressions
- Maximum paper insertion depth: up to 2 inches from center of embossed surface
- Dimensions: 8.25" x 12.8" x 7.5"  
Weight: 30.5 lbs.
- Power Source: 110v; other voltages available
- One year warranty included; extended warranty available

# NEW KON Electric Perforators

Model 15F



Model 15K



Model 10



Model 112



## Highlights:

- Whisper quiet operation (50dB)
- Fixed message dies
- Perforates up to 15 sheets\*
- Highly economical electric perforator
- Automatically activated by inserting paper or via push button
- Paper insertion and position error minimized with built in adjustable back gauge and side guides
- Clear, uniform perforation each and every time
- Carrying handle
- Easy to use
- Minimal table top footprint; sturdy and reliable
- One year warranty included; extended warranty available

## Highlights:

- Whisper quiet operation (50dB)
- Interchangeable message dies
- Perforates up to 15 sheets\*
- Highly economical electric perforator
- Automatically activated by inserting paper or via push button
- Paper insertion and position error minimized with built in adjustable back gauge and side guides
- Clear, uniform perforation each and every time
- Carrying handle
- Easy to use
- Minimal table top footprint; sturdy and reliable
- One year warranty included; extended warranty available

## Highlights:

- A full range of characters, dates, numbers, cancellations, logos & symbols are available
- Perforates up to 20 sheets\*
- Automatic/Manual operation
- Fast, convenient, and easy to operate
- Clear, uniform perforation each and every time
- Rugged construction made of heavy-duty aluminum alloy die casting. All steel punches and die plate . Plastic side covers
- Completely enclosed gears and motor bearings are lubricated for life
- One year warranty included; extended warranty available

## Highlights:

- A full range of characters, dates, numbers, cancellations, logos & symbols are available
- Perforates up to 35 sheets\*
- Automatic/Manual operation
- Security Key and Power Save Mode
- Clear, uniform perforation each and every time
- Rugged construction made of heavy-duty aluminum alloy die casting. All steel punches and die plate . Plastic side covers
- Completely enclosed gears and motor bearings are lubricated for life.
- One year warranty included; extended warranty available

\* Dependent upon paper weight & configuration

# NEW KON SecureSeal 70

Embossing Machine/Transcript Validator



## Primary features:

- Whisper quiet operation (50dB)
- A quality hand-engraved brass seal
- Easily interchangeable dies
- Adjustable pressure control
- Key lock prevents unauthorized use
- Automatically activated by inserting paper or via push button
- Paper insertion and position error minimized with built in adjustable back gauge and side guides
- Clear, uniform impressions on documents and gold foil seals
- Carrying handle
- Minimal table top footprint; sturdy and reliable
- Easy to use



## Recommended Applications:

All Vital & Official Documents:

- School & University Transcripts and Validations
- Government Seals: Assessor-Clerk-Recorder, Courts
- Vital Statistics: Birth, Death, Marriage & Health Departments
- Notary Public, Engineering & Architecture Firms
- Passport Control

## Specifications:

Dimensions: 3.7"W x 11.2"D x 7.2"H Weight: 17.6 lbs.

Power Source: Free voltage (100-240V)

Maximum paper insertion depth: 2.7" from center of embossed seal

Diameter of impression surface: Varies by model

One year warranty included; Extended warranties available

Maintenance agreements available

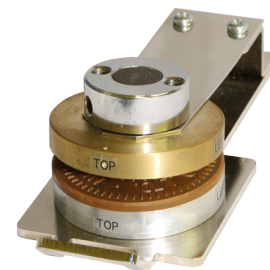
## Interchangeable Die Blocks:

Three sizes available

Model 70-27: 1" diameter

Model 70-36: 1.4" diameter

Model 70-45: 1.75" diameter



# NEW KON SecureSeal 60N

## Manual Embossing Machine

### Primary features:

- Extra long handle provides smooth, easy-pull embossing
- A quality hand-engraved brass seal
- Easily interchangeable dies
- Choose from two seal sizes: 1<sup>1</sup>/<sub>8</sub>" + 1<sup>3</sup>/<sub>8</sub>"
- Convenient and easy to operate
- Clear, uniform impressions each and every time
- Compact and portable unit

### Recommended Applications:

All Vital & Official Documents:

- School & University Transcripts and Validations
- Government Seals: Assessor-Clerk-Recorder, Courts
- Vital Statistics: Birth, Death, Marriage & Health Departments
- Notary Public, Engineering & Architecture Firms
- Passport Control

### Specifications:

Dimensions: 3.5" W x 9" D x 4.6" H

Weight: 11 lbs.

Maximum paper insertion depth: 2 inches from center of embossed seal

One year warranty included; Extended warranties available

Maintenance agreements available



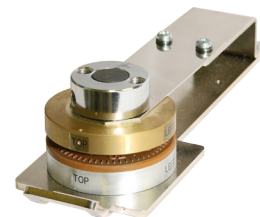
### Interchangeable Die Blocks:

Three sizes available

Model 60-27: 1" diameter

Model 60-36: 1.4" diameter

Model 60-45: 1.75" diameter



# NEW KON SecureSeal 110

Electric Embossing Machine/Transcript Validator

## Primary features:

- Whisper-quiet operation
- A quality hand-engraved brass seal
- Key lock prevents unauthorized use
- Automatically activated by inserting paper or via push button
- Paper insertion and position error minimized with built in side guide and back gauge
- Clear, uniform impressions each and every time

## Recommended Applications:

All Vital & Official Documents:

- School & University Transcripts and Validations
- Government Seals: Assessor-Clerk-Recorder, Courts
- Vital Statistics: Birth, Death, Marriage & Health Departments
- Notary Public, Engineering & Architecture Firms
- Passport Control

## Specifications:

Dimensions: 8.25" W x 12.8" D x 7.5" H

Weight: 30.5 lbs.

Maximum paper insertion depth: 2 inches from center of embossed seal

Maximum diameter of impression surface: 1.75 inches

Power Source: 110V; other voltages available

One year warranty included; Extended warranties available

Maintenance agreements available



# NEW KON Model 15F

Electric Perforating Machine



## Primary features:

- Whisper quiet operation (50dB)
- Highly economical fixed die electric perforator
- Automatically activated by inserting paper or via push button
- Paper insertion and position error minimized with built in adjustable back gauge and side guides
- Clear, uniform perforation each and every time
- Carrying handle
- Easy to use
- Minimal table top footprint; sturdy and reliable



## Recommended Applications:

Cancelling, Receipting, Coding and Validating for Invoices, Documents, Claims, Checks, X-Rays, Credit Cards, Badges, Passports, etc.

## Specifications:

Dimensions: 3.7"W x 11.9"D x 7.2"H Weight: 17.6 lbs.

Power Source: Free voltage (100-240V)

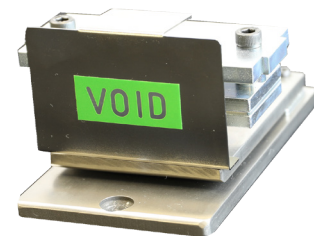
Perforating Ability: Up to 15 sheets of paper\*

One year warranty included; Extended warranties available

Maintenance agreements available

\*Dependent upon paper weight and configuration

**Die Block:**  
Fixed Die Block  
Available in PAID/VOID/CNCLD  
or custom text



Actual size



# NEW KON Model 15K

Electric Perforating Machine



## Primary features:

- Whisper quiet operation (50dB)
- Interchangeable message dies
- Highly economical electric perforator
- Automatically activated by inserting paper or via push button
- Paper insertion and position error minimized with built in adjustable back gauge and side guides
- Clear, uniform perforation each and every time
- Carrying handle
- Easy to use
- Minimal table top footprint; sturdy and reliable



## Recommended Applications:

Cancelling, Receipting, Coding and Validating for Invoices, Documents, Claims, Checks, X-Rays, Credit Cards, Badges, Passports, etc.

## Specifications:

Dimensions: 3.7"W x 11.9"D x 7.2"H Weight: 17.6 lbs.

Power Source: Free voltage (100-240V)

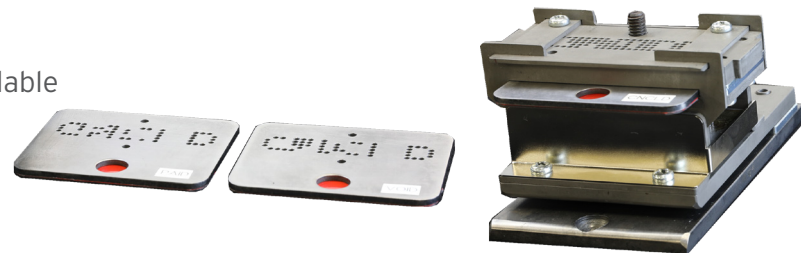
Perforating Ability: Up to 15 sheets of paper\*

One year warranty included; Extended warranties available

Maintenance agreements available

\*Dependent upon paper weight and configuration

**Die Block:**  
Interchangeable Key Dies  
Available in PAID/VOID/CNCLD  
or custom text



Actual size

# NEW KON Perforator Model 208-705F

## Manual Perforating Machine

### Primary features:

- Utilizes a "key system" which allows for perforation of two individual "RETIRED" text fields.
- Other perforations (PAID, VOID, CANCELLED) can be quoted upon request
- Able to perforate one badge at a time
- Clear, uniform perforation each and every time
- Fast, convenient, and easy to operate
- Rugged construction made of heavy-duty aluminum alloy die casting. All steel punches and die plate.
- Encased in a plastic case for economical pricing and shipping.

### Recommended Applications:

Badges & Identification Cards

### Specifications:

Dimensions: 8.5" W x 11.6" D x 19.5" H

Weight: 22 lbs.

Perforating ability: One badge

Power: N/A. Die block can be mounted on electric model.  
Call for details.

One year warranty included; Extended warranties available

Maintenance agreements available





# NEW KON Perforator Model 10-905

Electric Perforating Machine

## Primary features:

- A full range of characters, dates, numbers, cancellations, logos & symbols are available
- Able to perforate up to 20 sheets\*
- Automatic/Manual operation
- Fast, convenient, and easy to operate
- Clear, uniform perforation each and every time
- Rugged construction made of heavy-duty aluminum alloy die casting. All steel punches and die plate
- Encased in a plastic case for economical pricing and shipping.
- Completely enclosed gears and motor bearings are lubricated for life.



## Recommended Applications:

Dating, Numbering, Cancelling, Receipting, Coding and Validating for Invoices, Documents, Claims, Checks, X-Rays, Credit Cards, Badges, Passports, etc.

## Specifications:

Dimensions: 9.5" W x 13.4" D x 10.4" H Weight: 55 lbs.

Perforating ability: Up to 20 sheets\*

Power: 120V; other voltages available upon request

One year warranty included; Extended warranties available

Maintenance agreements available

\*Dependent upon paper weight & configuration

### PIN SELECTOR TYPE

- 8-digit dating/numbering
- 10-digit dating/numbering
- Paid & Date (8-digits)
- Upper line & date (8-digits)
- Two lines & date (8-digits)

PAYABLE PAID VOID  
RETIRED CANCELLED

# NEW KON Perforator Model 112-905

Electric Perforating Machine

## Primary features:

- A full range of characters, dates, numbers, cancellations, logos & symbols are available
- Able to perforate up to 35 sheets\*
- Automatic/Manual operation
- Security Key and Power Save Mode
- Clear, uniform perforation each and every time
- Fast, convenient, and easy to operate
- Rugged construction made of heavy-duty aluminum alloy die casting. All steel punches and die plate
- Encased in a plastic case for economical pricing and shipping.
- Completely enclosed gears and motor bearings are lubricated for life.



## Recommended Applications:

Dating, Numbering, Cancelling, Receipting, Coding and Validating for Invoices, Documents, Claims, Checks, X-Rays, Credit Cards, Badges, Passports, etc.

## Specifications:

Dimensions: 17.2" W x 11" D x 12" H

Weight: 98 lbs.

Perforating ability: Up to 35 sheets\*

Power: 120V; other voltages available upon request

One year warranty included, Extended warranties available

Maintenance agreements available

### PIN SELECTOR TYPE

- 8-digit dating/numbering
- 10-digit dating/numbering
- Paid & Date (8-digits)
- Upper line & date (8-digits)
- Two lines & date (8-digits)

PAYABLE PAID VOID  
RETIRED CANCELLED

\*Dependent upon paper weight & configuration

# NEW KON Perforator Model 206

Manual Perforating Machine

## Primary features:

- Provides virtually limitless applications - almost any 7 character word can be installed
- Perforates up to 8 documents simultaneously
- Clear, uniform perforation each and every time
- Convenient and easy to operate
- Compact and portable unit

## Recommended Applications:

Expired Drivers Licenses, Securities, Payments, Bills, Claims, Invoices, Passports, Certificates, Forms, Deposits, Checks, Vouchers, Gift Cards

## Specifications:

Dimensions: 6.5" W x 10.75" D x 6" H

Weight: 13 lbs.

Perforating ability: Up to 8 sheets, depending on paper thickness & number of characters

One year warranty included; Extended warranties available

Maintenance agreements available



<u>Standard Models</u>	<u>Text Description</u>
206P	PAID
206V	VOID
206C	CNCLD
206PO	PAGADO
206CO	CANCELADO

<u>Custom Model</u>	
206U	"Universal Text"

RETIRED CANCELLED  
PAGADO PAID VOID

# NEW KON Model CC1603A

Auto Feed Card Perforator

## Primary features:

- Will void up to 500 cards in a single operation
- Any *non-embossed* card will feed flawlessly
- Custom symbols, characters, & wording available upon request
- Convenient and easy to operate

## Recommended Applications:

Health Insurance Cards, Employee Badges, Gift Cards, Drivers Licenses, Credit Cards

## Specifications:

Dimensions: 12.75" W x 12.25" D x 9.25" H

Weight: 48 lbs.

Motor: 120V, 60Hz

Perforating ability: Up to 500 cards

One year warranty included; Extended warranties available

Maintenance agreements available

