



FATTORI Dry Marking Electrical Machine T2E/M

MODEL T2E/M Dry Marking Electrical Machine

**PERMANENT - PRECISE - UNFALSIFIABLE
NO CONSUMABLES REQUIRED FOR
PACKAGING IN PHARMACEUTICAL,
COSMETIC AND FOOD COMPANIES**



The T2E/M is a dry marking electric machine designed to encode production and expiry dates, batches, and more on packaging in various sectors.

It can imprint paper, cardboard, or carton boxes with lines of digits, letters, or a combination of both.

The strength of this machine compared to ink-based systems is that the marking is permanent, very precise, and the customer will not have to spend on consumables. Additionally, all the components of this machine are durable and sturdy, and the marking cycle is very fast, taking just 0,7 seconds, allowing for approximately 12.000 to 20.000 boxes per day (depending on insertion speed).

The marking is performed by steel type characters housed in an assembler box that can contain up to three lines, allowing the customer to write production dates, expiry dates, and batch numbers.

The machine has the ability to mount characters with three different heights: with a character height of 2 mm, 15 characters per line can be marked, reaching up to 30 mm in length; with a height of 2,5 mm, 16 characters can fit, extending to a maximum length of 40 mm, while a 3 mm character accommodates 13 characters, up to 39 mm in length.

The user can easily change the date or batch characters using the tweezers provided with the character kit to remove and insert the desired characters. The machine body is made of iron, while the type characters are made of heat-treated steel.

Adjusting the marking pressure according to the material and its thickness is simple: the user just needs to rotate the ring above the assembler box counterclockwise to increase the pressure, and clockwise to decrease it. Additionally, the machine operates very quietly, making it suitable for any environment.

The positioning of documents can be adjusted using the depth and lateral mobile guides, with a maximum insertion depth of around 80 mm from the edge of the packaging. The ability to rotate the assembler box to any position allows marking in any desired position on the case or even on large formats.

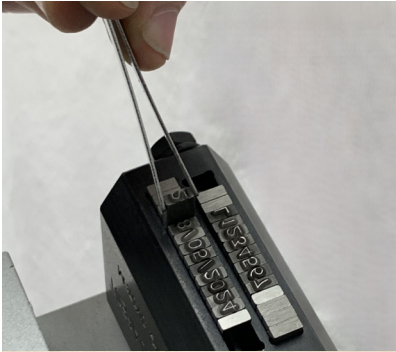
We offer a variety of perforators and embossers to fulfill your security requirements.

Please contact us for additional information at:



FATTORI Dry Marking Electrical Machine T2E/M

The marking process can be initiated in three ways: the operator can touch the microswitch with the inserted case (which automatically starts the operation), or press the start button, or use an optional pedal.



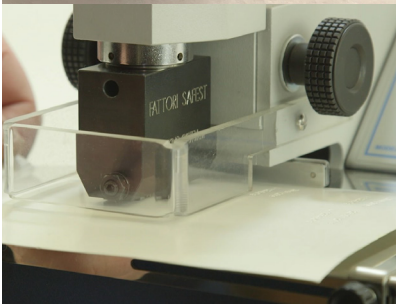
The machine features an automatic paper release system in case the inserted material is too thick, allowing the operator to resume normal operation immediately.

An LCD screen displays the number of markings and the machine's working hours.

For security purposes, the T2E/M is equipped with a safety key to prevent unauthorized use.

It also automatically detects voltage and can operate in all countries worldwide.

With its high performance, ease and speed of use, versatility, and quiet operation, the T2E/M proves to be a valuable tool for inserting dates and batch numbers into the packaging of food, pharmaceutical, and cosmetic companies, ensuring the safety and authenticity of the packaging.



Technical Data

Model T2E/M

Type of current	: 110 V - 60 Hz; 220/240 V - 50 Hz
Height of characters	: 2 mm, 2,5 mm or 3 mm
Maximum length of marking	: mm. 40
Insertion depth	: unlimited (the assembler box can rotate 360° allowing the user to mark in any position)
Marking time	: 0,7 s
Optional	: foot pedal
Net Weight	: kg. 23
Machine dimensions LxWxH	: cm. 27x24x30



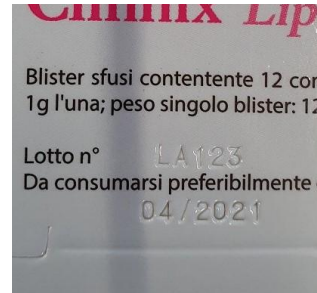
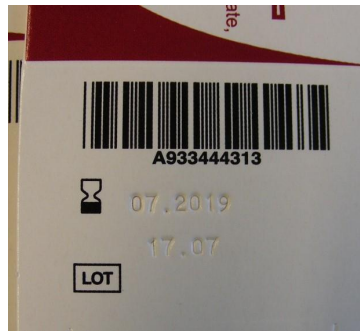
We offer a variety of perforators and embossers to fulfill your security requirements.

Please contact us for additional information at:



FATTORI Dry Marking Electrical Machine T2E/M

SAMPLES OF MARKING ON SOME BOXES



We offer a variety of perforators and embossers to fulfill your security requirements.

Please contact us for additional information at: